



# **WEATHERSCOUT® WATCH**

Radar Control and Analysis

THE WORLD LEADER IN SOLID STATE WEATHER RADAR SYSTEMS



# WEATHERSCOUT® WATCH

Radar Control and Analysis

### THE PROBLEM WITH RADAR TOOLS TODAY

In high-impact weather situations, clarity and speed are critical, but for many weather professionals, getting the complete picture still means using multiple applications, browser tabs, and displays. Radar on one screen. River gauges on another. Camera feeds, satellite imagery, storm alerts – each with its own interface, login, and layout. Whether you’re a forecaster, emergency responder, or decision-maker in an operations center, this fragmented setup slows response and increases the risk of missing something vital.

### BUILT AROUND RADAR

At its core, WeatherScout Watch is built to make live radar data not only accessible but also actionable. Users can view ray-by-ray radar returns in real-time and select from a full suite of radar products, including reflectivity, velocity, dual-pol variables, storm tracks, accumulation, and more.

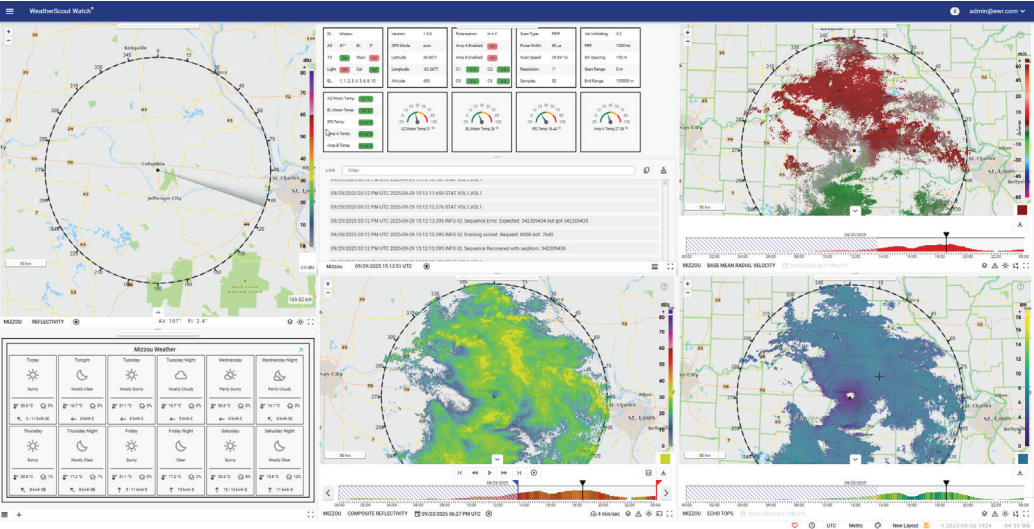
One of WeatherScout Watch's most powerful features is its ability to display multiple radars in separate, synchronized panels within a single interface. Whether you’re monitoring overlapping coverage zones, comparing views from different radar sites, or managing a distributed network of radars, the platform enables you to view individual radar feeds side by side without switching applications. This provides a complete, high-resolution picture of evolving weather conditions.

### ONE PLATFORM, CONFIGURABLE FOR ANY MISSION

While radar is the foundation, WeatherScout Watch is highly customizable to meet a wide range of operational needs. Forecast offices can build layouts tailored to convective development and storm tracking. Emergency management centers may add river gauges, EMS alert feeds, live camera streams, or traffic data—each panel arranged within the same dashboard to support real-time decision-making

### REAL TIME RADAR CONTROL AND SMART DETECTION

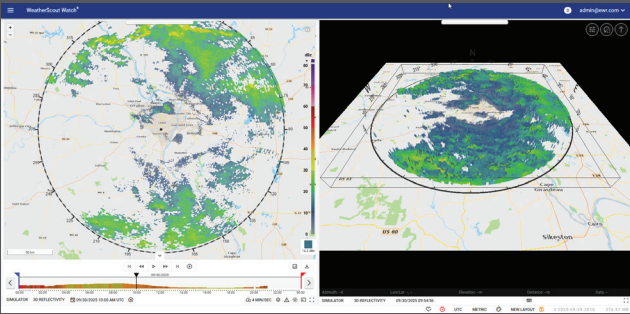
WeatherScout Watch isn’t limited to viewing radar—it enables direct control of radar operations. Users can initiate scans, define sectors, and adjust settings such as pulse width and Pulse Repetition Frequency (PRF) to improve clarity for close-range threats or long-range sensitivity. This level of control transforms radar from a passive display into an interactive decision-making tool.



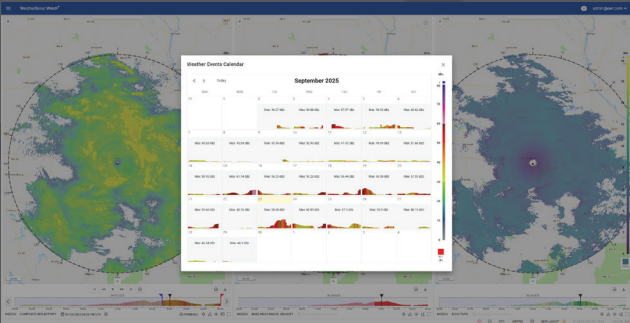
View and control multiple radars from multiple locations in a single, easy to use display. An intuitive tile-based architecture allows users to display multiple products from multiple radars on one screen. Seamlessly integrate ancillary data sources such as river gauges and live camera feeds.

### THE NEW STANDARD IN RADAR OPERATIONS

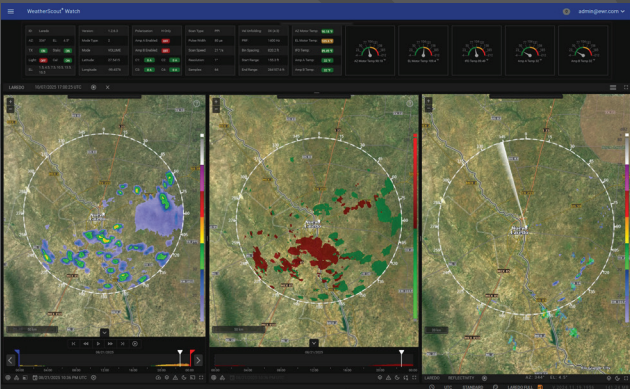
By unifying multi-radar views, real-time control, environmental data, and automated weather intelligence into one intuitive interface, EWR's WeatherScout Watch sets a new standard for operational weather awareness. The platform streamlines workflows for forecasters, emergency managers, and other decision-makers by eliminating the need to switch between disconnected systems. Instead, it delivers a single, flexible environment that adapts to the mission—whether monitoring severe storms, tracking precipitation trends, or coordinating real-time emergency response. With the most critical weather data and tools available at a glance, users can act faster, with greater clarity and confidence, when it matters most.



For a deeper analysis, data can be viewed in 3D, providing teams with a spatial understanding of storm structure, growth, and movement.



With a timeline and calendar interface, users can instantly jump to any point in time, replay radar data, and animate storm evolution.



Dark mode with satellite image map layer.





336 Leffingwell Avenue, St. Louis, MO U.S.A. 63122  
**314.821.1022 | [www.ewradar.com](http://www.ewradar.com)**